

SHAFT COUPLINGS



RIGID SHAFT COUPLINGS

PHONE: 516.328.3300 • FAX: 516.326.8827 • WWW.SDP-SI.COM

> MATERIAL:

Steel, Zinc Plated

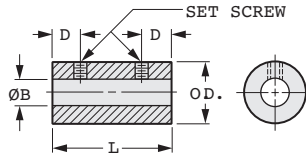


Fig. 1

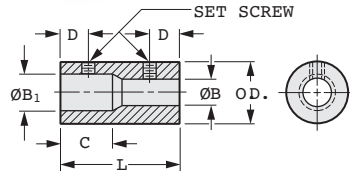


Fig. 2

INCH COMPONENT

Catalog Number	O.D.	B Bore +.002 -.000	B ₁ Bore +.002 -.000	C	D	L Length	Set Screw
Fig. 1							
A 5C 9-0606	7/16	.1875	—	—	3/16	3/4	#8-32
A 5C 9-0808	1/2	.250					#10-24
A 5C 9-1010	5/8	.3125					1/4-20
A 5C 9-1212	3/4	.375					
A 5C 9-1414	7/8	.4375					
A 5C 9-1616	1	.500					
Fig. 2							
A 5C 9-0608	1/2	.1875	.250	3/8	3/16	3/4	#8-32
A 5C 9-0610	5/8		.3125				#8-32 / #10-24
A 5C 9-0612	3/4		.375				#8-32 / 1/4-20
A 5C 9-0810	5/8		.3125				#10-24
A 5C 9-0812	3/4		.375				
A 5C 9-0814	7/8	.250	.4375	1/2	1/4	1	1/4-20
A 5C 9-0816	1	.500					
A 5C 9-1216	1	.375					

PRECISION MULTIJAWEED COUPLINGS

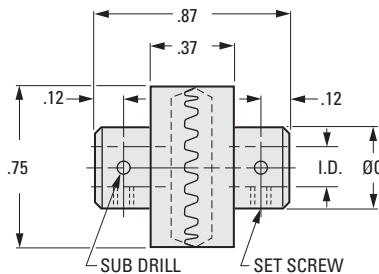


64 PITCH
48 TEETH

> MATERIAL:

303 Stainless Steel

Stainless steel socket head set screws supplied.



INCH COMPONENT

Catalog Number	I.D. +.0005 -.0000	C Hub Dia.	Set Screws	Sub Drill	Max. Torque ozf in.
S9917Z-G51-2	.1248	5/16	#2-56	.029	500
S9917Z-G51-3	.1873	3/8	#4-40	.040	
S9917Z-G51-4	.2498	1/2	#6-32	.070	

6-76
D815

REVISED:
05/22/23

1

R

T

1

2

3

4

5

6

7

8

9

10

11

12

13

14

15

16