

WITH CASING
PANEL MOUNTING

PHONE: 516.328.3300 • FAX: 516.326.8827 • WWW.SDP-SI.COM

> MATERIAL:

- Flexible Cable - Steel
- Flexible Casing - Vinyl Covered Steel
- End Fittings - Plated Steel



SPECIAL ORDERS for Many Combinations
of Fittings and Lengths Accepted.

> PERFORMANCE DATA:

Shaft Dia.	Mode of Operation	Operating Torque Capacity, Winding and Unwinding Directions, (lbf in.) Input							Max. Torsional Deflection at Load Indicated (Degrees per Foot of Shaft)		
		Radius of Curvature							lbf in.	Winding	Unwinding
		20"	15"	12"	10"	8"	6"	4"			
.130	Manual	—	—	7.6	7.1	6.6	5.6	3.6	1	13.0	13.0
.150		20.9	19.5	18.4	17.2	15.3	12.1	6.2		6.0	6.0
.187		33.4	31.4	29.4	27.6	24.8	19.8	10.0		3.0	3.0

End Fitting Fig. 1, Fig. 2 & Fig. 4 are available on special order.
Fig. 3 is the standard end fitting.

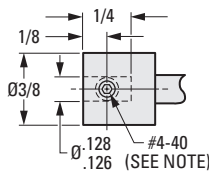
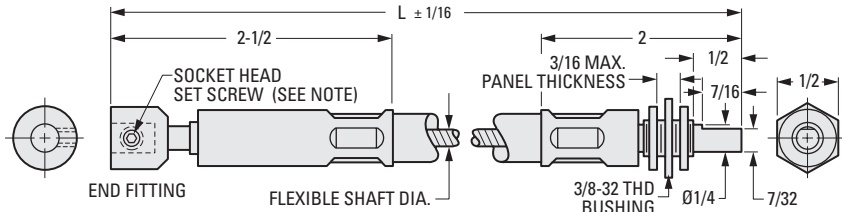


Fig. 1

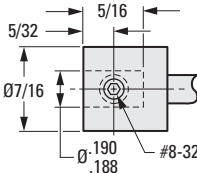


Fig. 2

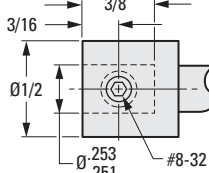


Fig. 3 (Standard)

INCH COMPONENT

Catalog Number	Flexible Shaft Diameter	L Length in.	Standard End Fitting Fig.
A 7C14-24433	.130	24	3
A 7C14-30533		30	
A 7C14-36533	.150	36	
A 7C14-20633	.187	20	
A 7C14-32633		32	

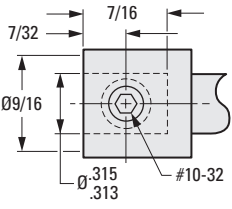


Fig. 4

NOTE: Fig. 1 style end fitting for .187 diameter flexible shaft has two set screws.

- I
- R
- T
- 1
- 2
- 3
- 4
- 5
- 6
- 7
- 8
- 9
- 10
- 11
- 12
- 13
- 14
- 15
- 16