

SPLIT TYPE HUB
STAINLESS STEEL
ZERO BACKLASH

PHONE: 516.328.3300 • FAX: 516.326.8827 • WWW.SDP-SI.COM

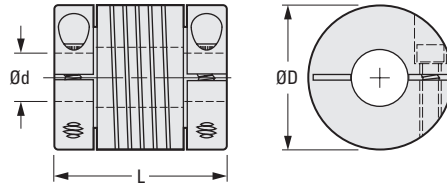
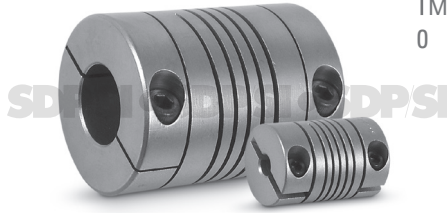


› **MATERIAL:**
17-4PH Stainless Steel

› **MISALIGNMENT COMPENSATION:**
Max. Angular Offset: 5°
Max. Lateral Offset: 0.25
Max. Axial Motion: ± 0.25

› **FEATURES:**
 One-Piece Construction.
 Integral Clamp.
 Shaft Relief.
 High Fatigue Resistance.
 Constant Velocity.
 Adapts to High- and Low-Speed Applications.

Bore diameter combinations are available on special order.



The projections shown are per ISO convention.

METRIC COMPONENT

Catalog Number	d Bore +0.05 0	D Dia.	L Length ± 0.25	Screw Size	Momentary* Dynamic Torque N • m	Torsional Flexibility Arc Min./ N • m	Inertia** x 10 ⁻⁴ kg cm sec. ²
S50HWWW15H0303	3	15	22	M2	1.4	114	0.078
S50HWWW15H0404	4				1.3	156	
S50HWWW15H0505	5				1.2	222	
S50HWWW20H0404	4	20	28	M3	2.6	59.4	0.32
S50HWWW20H0505	5				2.5	78	
S50HWWW20H0606	6				2.3	96	
S50HWWW25H0606	6	25	30	M3	5.7	32.4	0.84
S50HWWW25H0707	7				5.5	39.6	
S50HWWW25H0808	8				5.1	49.2	
S50HWWW25H0909	9	30	38	M4	4.7	60	2.2
S50HWWW25H1010	10				4.3	78	
S50HWWW30H0909	9				9.5	24	
S50HWWW30H1010	10	30	38	M4	8.9	28.8	2.2
S50HWWW30H1111	11				8.3	34.8	
S50HWWW30H1212	12				7.7	42	

* Torque listed is maximum momentary value:
 For NONREVERSING applications, the torque rating is 1/2.
 For REVERSING applications, the torque rating is 1/4.
 ** Inertia is based on the smallest standard bore diameter.

