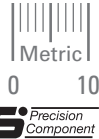


SET SCREW TYPE HUB BELLOWS COUPLINGS

SDP/SI

STANDARD DUTY
HEAVY-DUTY

PHONE: 516.328.3300 • FAX: 516.326.8827 • WWW.SDP-SI.COM



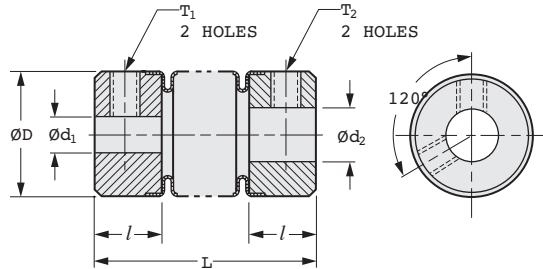
> MATERIAL / FINISH:

- Hubs - Brass
- Bellows - Phosphor Bronze
- Set Screws - Stainless Steel
- Finish - Tin Plate



> SPECIFICATION:

- d₁, d₂ Tolerance:
 - 3 mm +0.01/0
 - 4, 5 & 6 mm +0.012/0
 - 8 & 10 mm +0.015/0
 - 12 mm +0.018/0



- I
- R
- T
- 1
- 2
- 3
- 4
- 5
- 6
- 7
- 8
- 9
- 10
- 11
- 12
- 13
- 14
- 15
- A

METRIC COMPONENT

Catalog Number		d ₁ Bore H7	d ₂ Bore H7	D Dia.	T ₁	T ₂	l	Max. Torque N • m
L = 19	L = 32							
Standard Duty								
S50BP9MP03P0319	S50BP9MP03P0332	3	3	12	M2	M2	6.5	1.06
S50BP9MP03P0419	S50BP9MP03P0432		4			M3		
S50BP9MP03P0519	S50BP9MP03P0532		5					
S50BP9MP03P0619	S50BP9MP03P0632	6						
S50BP9MP04P0419	S50BP9MP04P0432	4	4		M3	M3		
S50BP9MP04P0519	S50BP9MP04P0532		5					
S50BP9MP04P0619	S50BP9MP04P0632		6					
S50BP9MP04P0819	S50BP9MP04P0832	8						
S50BP9MP05P0519	S50BP9MP05P0532	5	5	M3	M3			
S50BP9MP05P0619	S50BP9MP05P0632		6					
S50BP9MP05P0819	S50BP9MP05P0832		8					
S50BP9MP06P0619	S50BP9MP06P0632	6	6					
S50BP9MP06P0819	S50BP9MP06P0832		8					

Catalog Number	d ₁ Bore H7	d ₂ Bore H7	D Dia.	L	T ₁	T ₂	l	Max. Torque N • m
Heavy-Duty								
S50BPHMP05P0526	5	5	17	26.3	M3	M3	9	1.41
S50BPHMP05P0626	5	6						
S50BPHMP06P0626	6	6						
S50BPHMP08P0827	8	8	22	27	M4	M4	9	2.12
S50BPHMP10P1027	10	10						
S50BPHMP12P1227	12	12						