

## 368 Moduli di trasferimento L=85 mm Transfer modules L=85 mm / Überschubmodul L=85 mm

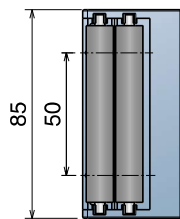
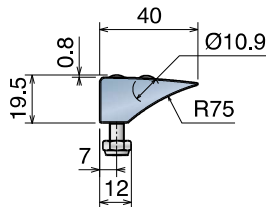
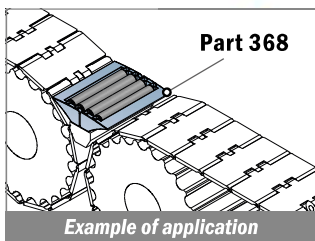
NOW ALSO WITH PFX ROLLERS

Delivery: **Easy** **Standard**

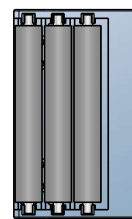
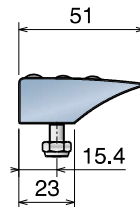


**Smart roller**

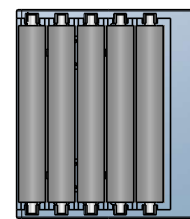
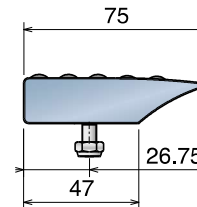
with mini bearings  
in stainless steel



TYPE A



TYPE B



TYPE C

Part	Article-Nr.	Type	Roller material
368	36801	A	Acetal resin
368	36802	B	Acetal resin
368	36803	C	Acetal resin
368	36801PFX	A	PFX
368	36802PFX	B	PFX
368	36803PFX	C	PFX
368	36801SS	A	Stainless steel
368	36802SS	B	Stainless steel
368	36803SS	C	Stainless steel

## 369 Moduli di trasferimento L=115 mm Transfer modules L=115 mm / Überschubmodul L=115 mm

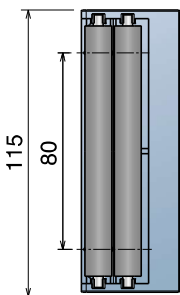
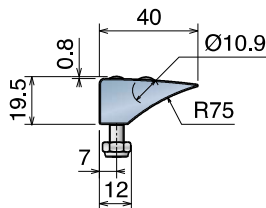
NOW ALSO WITH PFX ROLLERS

Delivery: **Easy** **Standard**

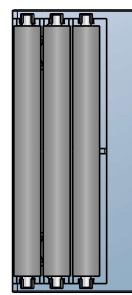
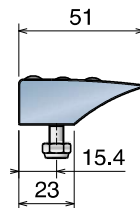


**Smart roller**

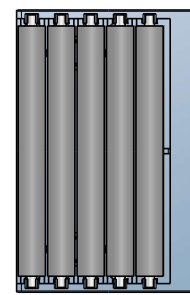
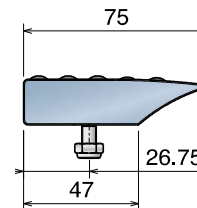
with mini bearings  
in stainless steel



TYPE A



TYPE B



TYPE C

Part	Article-Nr.	Type	Roller material
369	36901	A	Acetal resin
369	36902	B	Acetal resin
369	36903	C	Acetal resin
369	36901PFX	A	PFX
369	36902PFX	B	PFX
369	36903PFX	C	PFX
369	36901SS	A	Stainless steel
369	36902SS	B	Stainless steel
369	36903SS	C	Stainless steel

# 370-371

Componenti / Conveyor components / Komponenten

Materiale / Material / Materialien:

Modulo: resina acetica / Module: acetal resin / Module: Azetal

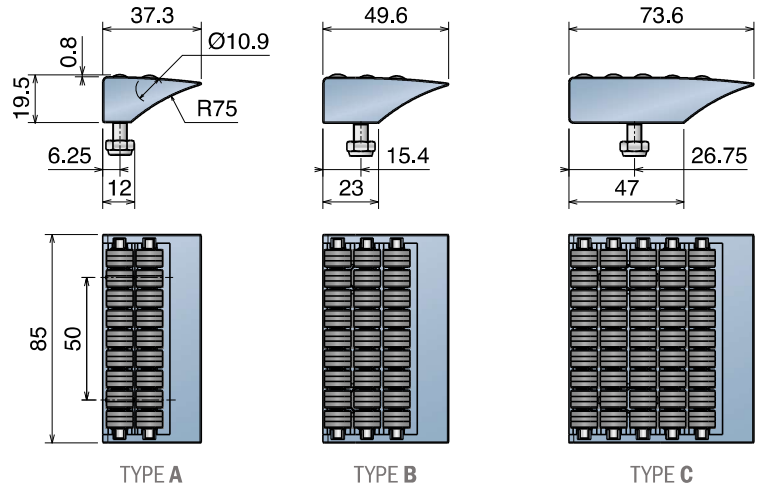
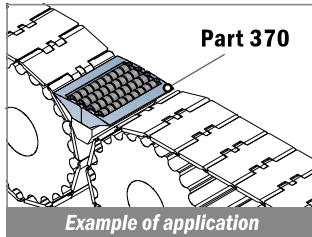
Perni, viti e dadi: Acciaio inox / Pins, screws and nuts: Stainless steel / Bolzen, Schraube und Mutter: Edelstahl

Rulli: resina acetica o acciaio inox / Rollers: acetal resin or stainless steel / Rollen: Azetal oder Edelstahl

## 370 Moduli di trasferimento L=85 mm Transfer modules L=85 mm / Überschubmodul L=85 mm

**NOW ALSO WITH PFX ROLLERS**

Delivery: **Easy** Standard

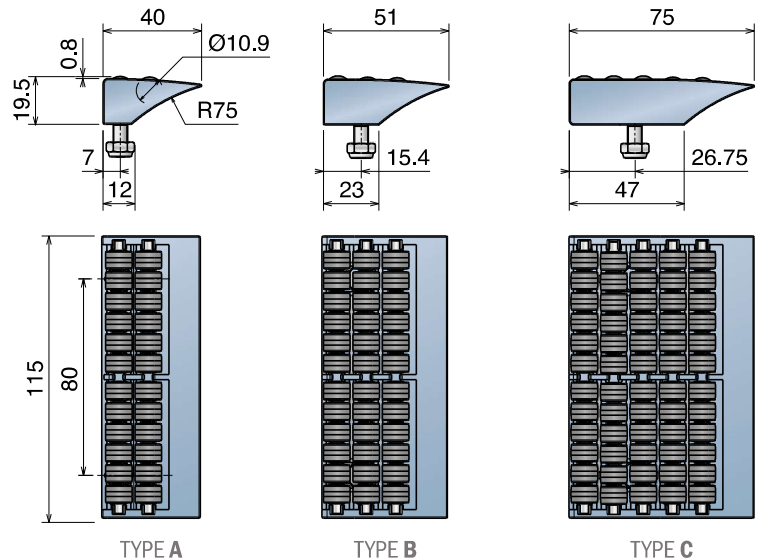
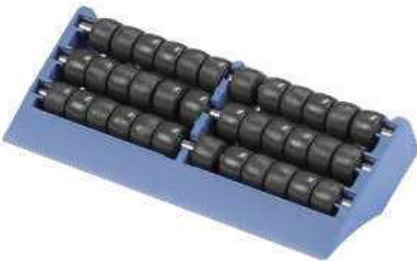


Part	Article-Nr.	Type	Roller material
370	37001	A	Acetal resin
370	37002	B	Acetal resin
370	37003	C	Acetal resin
370	37001PFX	A	PFX
370	37002PFX	B	PFX
370	37003PFX	C	PFX

## 371 Moduli di trasferimento L=115 mm Transfer modules L=115 mm / Überschubmodul L=115 mm

**NOW ALSO WITH PFX ROLLERS**

Delivery: **Easy** Standard



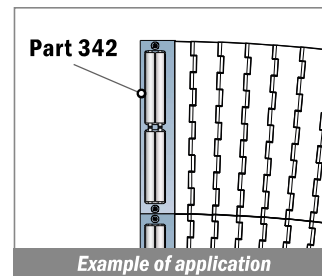
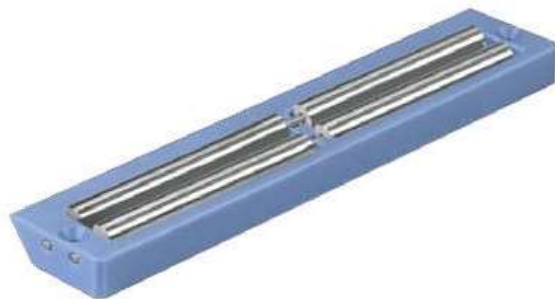
Part	Article-Nr.	Type	Roller material
371	37101	A	Acetal resin
371	37102	B	Acetal resin
371	37103	C	Acetal resin
371	37101PFX	A	PFX
371	37102PFX	B	PFX
371	37103PFX	C	PFX

# 342

Moduli di trasferimento L=200 mm  
Transfer modules L=200 mm / Überschubmodul L=200 mm

RANGE EXTENSION

Part	Article-Nr.	Type	Material
370	34201	A	BluLub
370	34201N	B	BluLub
370	34201NL	C	BluLub
370	34201S	A	PE Black
370	34201NS	B	PE Black
370	34201NLS	C	PE Black



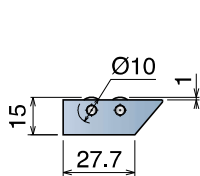
**Smart roller**

with mini bearings  
in stainless steel

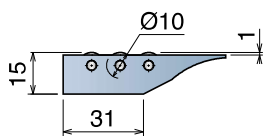
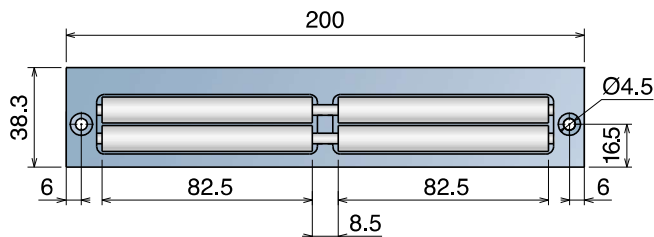


**Advantages:**

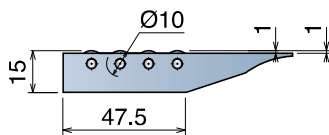
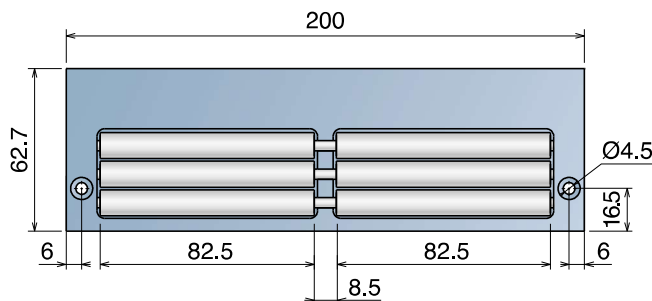
- Machined transfer
- High precision
- Solid structure
- Easy to install



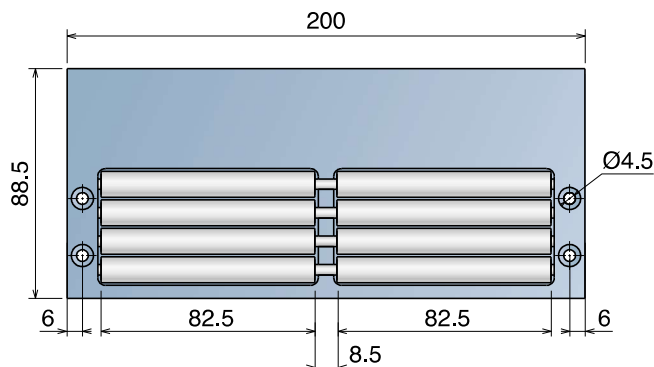
TYPE A



TYPE B



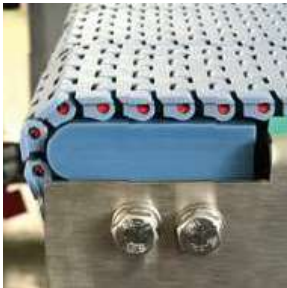
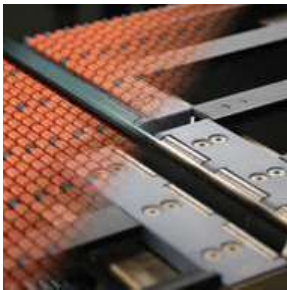
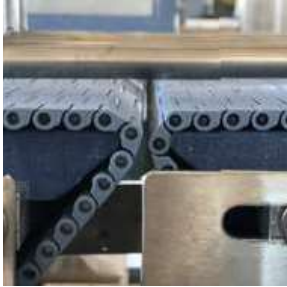
TYPE C



## NoseBars

RANGE EXTENSION

Movex NoseBars improve the efficiency of your production line.



Small products are becoming a challenge when they have to be transferred from head-to-tail, especially when they don't have a flat base like cans and petaloid bottles.

This is becoming even more critical when the line capacity is pushed to the limit and speeds or operating hours could compromise the required efficiency.

**Movex NoseBars are the best solution for a combination of short transfer and high performance.**

Moreover, they will let your line:

- Running with limited maintenance
- Exceeding in performances
- Achieving high speeds and loads

Paying specific attention during the development as well as during the automated production, together with our constant quality control checks, we have reached these features which can be reflected to all Movex products.

Movex NoseBars are suitable for all applications and conditions. Made from super-performance **BluLub®**, for a reduced coefficient of friction, the smallest gaps are reached between the belts to assure a smooth and precise transfer.

Movex NoseBars are available in three different versions: standard, with rollers and with bearings. Specific the executions with rollers and bearings are ideal for high speed and/or high load applications.

Less friction, longer lifetime, less belt elongation and less maintenance are facts which makes the Movex NoseBars reliable and longlasting products.

Find out the best combination for your application with our modular belts and NoseBars in the selection chart at page 272.

### **BluLub®**

*Do you know what it is?*

All Movex NoseBars are made with a compound developed by Movex, the **BluLub®**, a special high-performance material which contains the latest generation of solid lubricants.

The use of products made in **BluLub®** is designed for applications with limited lubrication, higher speeds and/or higher loads.

**BluLub®** requires less energy and with its lower coefficient of friction, improves the product stability and wear life of modular belts.

### **One piece**

**Custom made NoseBar, supplied in a single piece.**

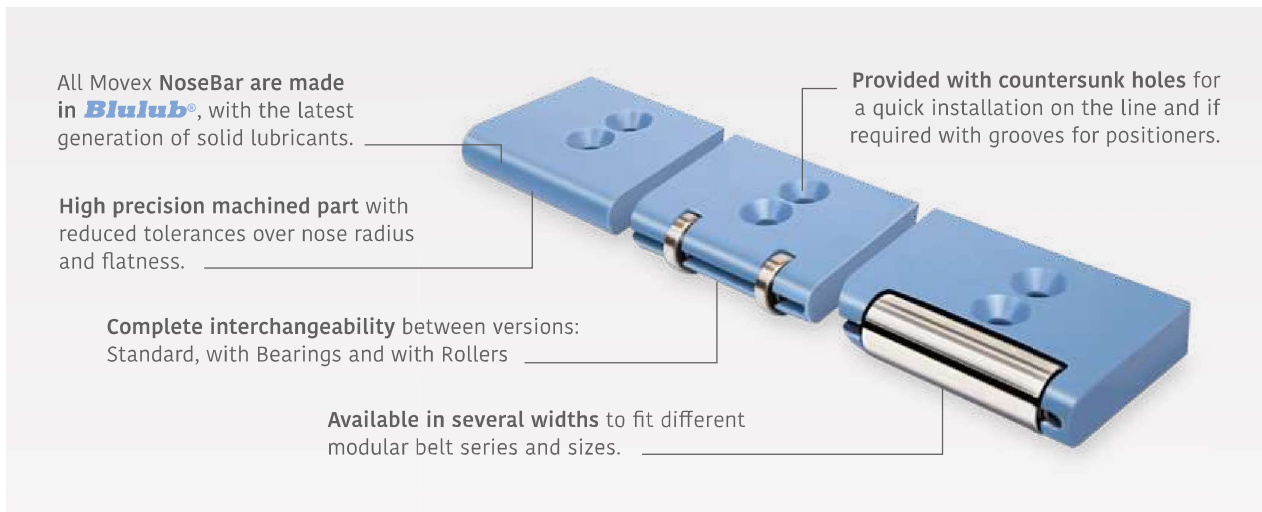
PATENTED

**One piece** is the patented system from Movex that reduces the required conveyor maintenance time drastically.

**One piece** is very quick to install and easy to clean!

More info at page 282 > 284





All Movex NoseBar are made in **BluLub®**, with the latest generation of solid lubricants.

High precision machined part with reduced tolerances over nose radius and flatness.

Complete interchangeability between versions: Standard, with Bearings and with Rollers

Available in several widths to fit different modular belt series and sizes.

Provided with countersunk holes for a quick installation on the line and if required with grooves for positioners.

## Three different options, fully interchangeable:



### Standard GENERAL APPLICATIONS

Static NoseBars with unique properties due the special Movex *BluLub®* compound are the ideal choice for any type of application, help improving the line efficiency, reducing dust and the frequency of maintenance.

- Available diameters: 6 / 19 / 22 mm
- Available also with grooves for positioners
- Can be machined to width, according your needs



### with Bearings HIGH-SPEED APPLICATIONS

Dynamic NoseBars with Bearings help improving the line efficiency and grant a longer life compared to traditional ones, minimizing the coefficient of friction and generating less wear. The rotating chrome steel bearings create an improved situation specific for high-speed applications.

- Available diameters: 19 / 22 mm
- Available also with grooves for positioners
- Can be machined to width, according your needs



### with Rollers HIGH-LOAD APPLICATIONS

Dynamic NoseBars with Rollers and bearings are long-lasting component that increase the efficiency of the processing line. Thanks to its sturdy stainless steel rollers, they are also the ideal choice for heavy load applications or high abrasive working conditions like dusts, liquids, etc.

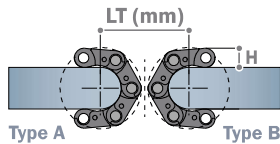
- Available diameter: 19 mm
- Available also with grooves for positioners (only for 521 FT)
- Can be machined to width, according your needs



## NoseBar selection and Transfer lengths

Movex modular belts	Belt Pitch (mm)	Nosebar Ø (mm)	STANDARD	WITH BEARINGS	WITH ROLLERS
<b>510 FT</b>	8	6	Pag 273	NOT APPLICABLE	NOT APPLICABLE
<b>520 FT</b> <b>520 HD FT</b> <b>520 FTT</b> <b>520 FG</b>	12,7	19	Pag 273	Pag 277	Pag 280
<b>520 GT</b> <b>520 LBP</b> <b>520 PRO LBP</b> <b>520 M</b>					
<b>521 FT</b>	12,7	19	Pag 274	Pag 277	Pag 280
<b>522 HD FT</b> <b>522 HD OTB</b>	12,7	19	Pag 274	Pag 278	Pag 281
<b>525 HD FT</b> <b>525 FTT</b> <b>525 HD FG</b> <b>525 HD GT</b>	15	19	Pag 273	Pag 277	Pag 280
<b>530 FT</b> <b>530 FTT</b> <b>530 GT</b>	15	19	Pag 275	Pag 278	Pag 281
<b>530 LBP</b>	15	19	Pag 275	Pag 279	NOT APPLICABLE
<b>530 PRO LBP</b>	15	19	Pag 276	Pag 279	NOT APPLICABLE

Standard and with bearings NoseBars are also available with a diameter of 22mm, contact your sales representative for more info.

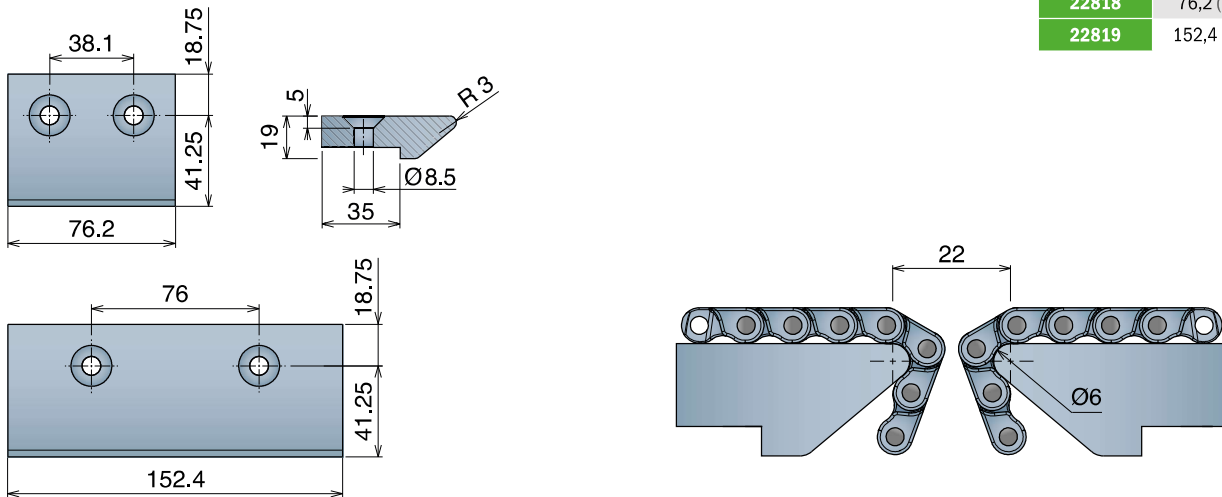


		Modular belt - Type B													
		510 FT	520 HD FT	520 FG	521 FT	522 HD FT	525 HD FT	525 HD FG	530 FT	520 GT	525 HD GT	530 LBP	520 PRO LBP	520 LBP	
Modular belt - Type A	<b>510 FT - H 6mm</b>	22	31	31	31	31	31	31	31	33	33	33,5	33,5	38,5	41,5
	<b>520 HD FT - H 8,7mm</b>	31	40	40	40	40	40	40	40	42	42	43	43	48	51
	<b>520 FG - H 8,7mm</b>	31	40	40	40	40	40	40	40	42	42	43	43	48	51
	<b>521 FT - H 8,7mm</b>	31	40	40	40	40	40	40	40	42	42	43	43	48	51
	<b>522 HD FT - H 8,7mm</b>	31	40	40	40	40	40	40	40	42	42	43	43	48	51
	<b>525 HD FT - H 8,7mm</b>	31	40	40	40	40	40	40	40	42	42	43	43	48	51
	<b>525 HD FG - H 8,7mm</b>	31	40	40	40	40	40	40	40	42	42	43	43	48	51
	<b>530 FT - H 8,7mm</b>	31	40	40	40	40	40	40	40	42	42	43	43	48	51
	<b>520 GT - H 10,7mm</b>	33	42	42	42	42	42	42	42	44	44	45	45	50	53
	<b>525 HD GT - H 10,7mm</b>	33	42	42	42	42	42	42	42	44	44	45	45	50	53
	<b>530 LBP - H 12,2mm</b>	33,5	43	43	43	43	43	43	43	45	45	45	45	50	53
	<b>530 PRO LBP - H 12,2mm</b>	33,5	43	43	43	43	43	43	43	45	45	45	45	50	53
	<b>520 PRO LBP - H 18mm</b>	38,5	48	48	48	48	48	48	48	50	50	50	50	55	58
	<b>520 LBP - H 20,7mm</b>	41,5	51	51	51	51	51	51	51	53	53	53	53	58	61

## NoseBars for 510 Series

Delivery: **Easy** **Standard**

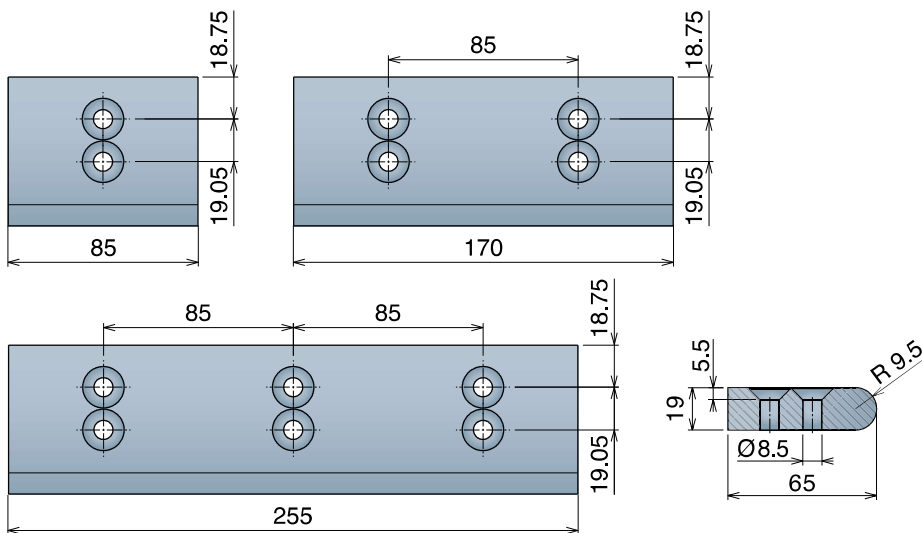
Article-Nr.	K (mm)
22818	76,2 (3')
22819	152,4 (6')



## NoseBars for 520/525 Series

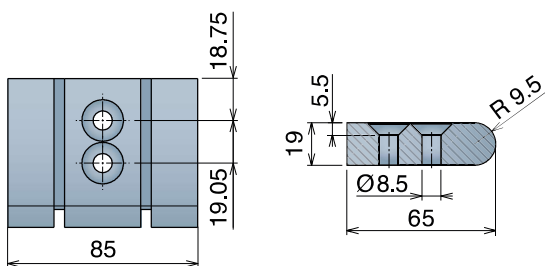
Delivery: **Easy** **Standard**

Article-Nr.	K (mm)
22801	85
22802	170
22803	255



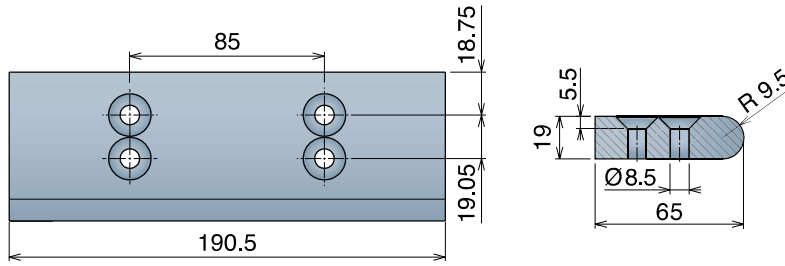
Version B - With 1 Positioner | Version C - With 2 Positioners

Article-Nr.	K (mm)
22807	85



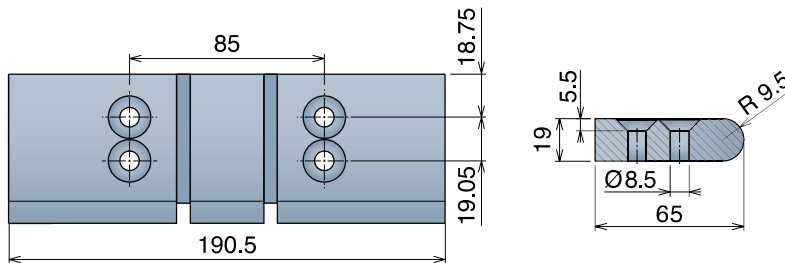
## NoseBars for 521 Series

Article-Nr.	K (mm)
<b>22840</b>	190,5 (7,5')



Version B - With 1 Positioner | Version C - With 2 Positioners

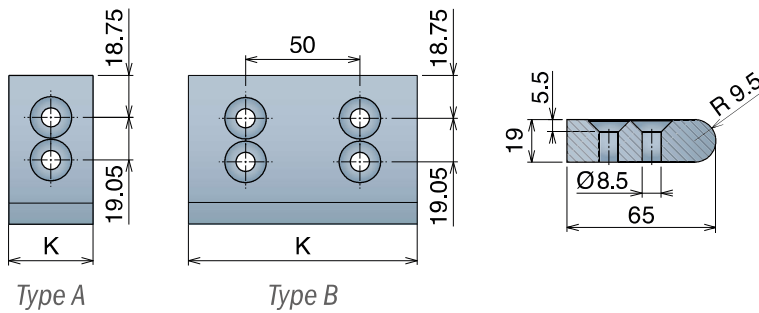
Article-Nr.	K (mm)
<b>22843</b>	190,5 (7,5')



## NoseBars for 522 HD Series

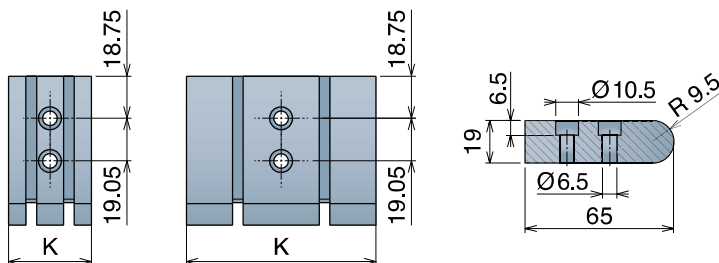
Delivery: **Easy** Standard

Article-Nr.	K (mm)	Type
<b>22820</b>	29	A
<b>22821</b>	34	A
<b>22822</b>	37	A
<b>22823</b>	51 (2')	A
<b>22808</b>	76,2 (3')	A
<b>22824</b>	100	B



Version B - With 1 Positioner | Version C - With 2 Positioners

Article-Nr.	K (mm)
<b>22820P</b>	29
<b>22821P</b>	34
<b>22822P</b>	37
<b>22823P</b>	51 (2')
<b>22808P</b>	76,2 (3')



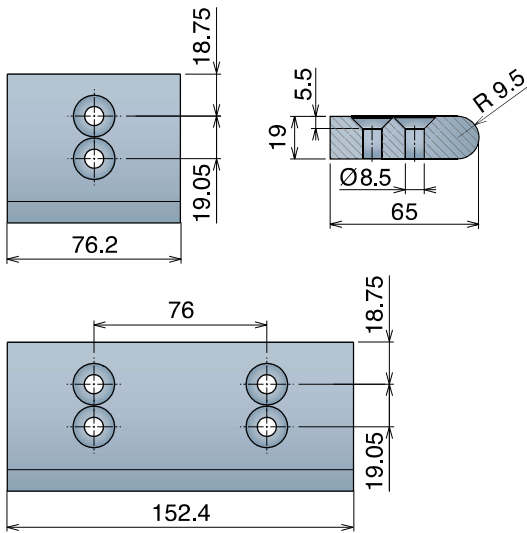


## NoseBars for 530 Series

(LBP version excluded)

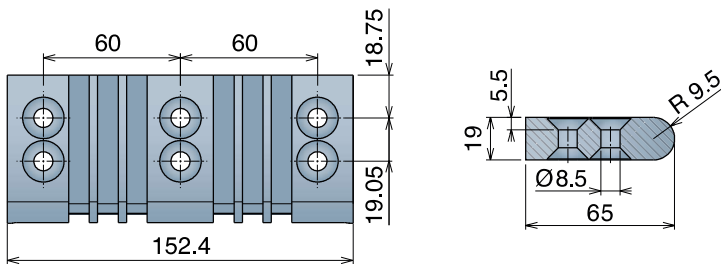
Delivery: **Easy** **Standard**

Article-Nr.	K (mm)
<b>22808</b>	76,2 (3')
<b>22809</b>	152,4 (6')



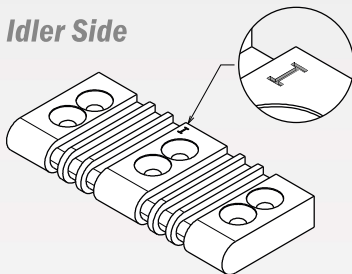
## NoseBar for 530 LBP

Article-Nr.	K (mm)
<b>22867</b>	152,4 (6')

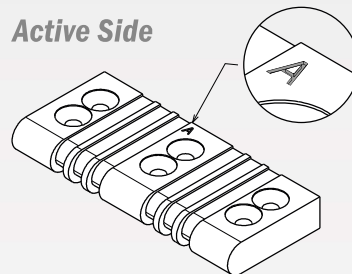


### How to use Movex 530 LBP double-face Nosebar

**Idler Side**

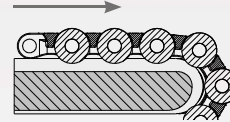


**Active Side**



Movex 530 LBP Nosebars are special Nosebars, specific to optimize the characteristics of this particular belt. It can be installed in two different ways: **idler side** and **active side**, depending if you want to obtain the accumulation or acceleration effects of the goods. In both modalities the same Nosebar is used: it simply needs to be installed on one side rather than the other. One face of the Nosebar is set up for the accumulation function and the opposite one for the acceleration function.

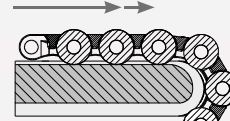
$V = X$



**Idler System (sectional view)**

The nosebar allows the belts rollers to remain raised above the surface, free to roll.

$V = 2X$

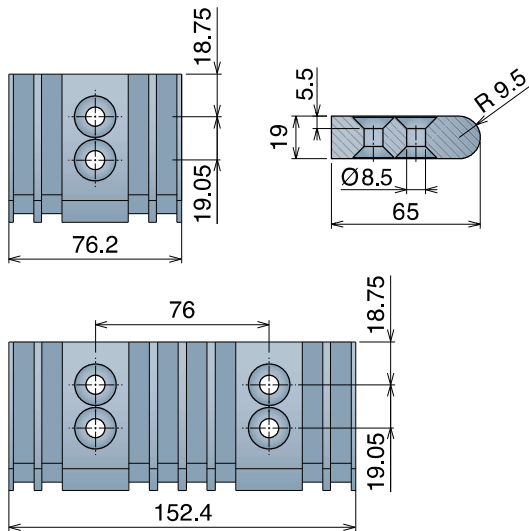


**Active System (sectional view)**

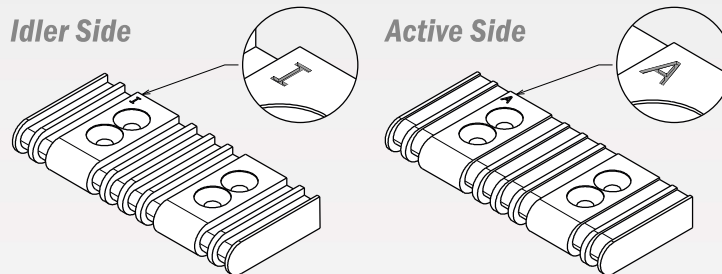
The nosebar allows the belt rollers to touch the surface, increasing the speed of the goods.

## NoseBar for 530 PRO LBP

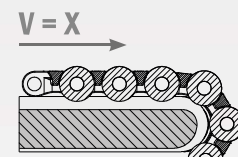
Article-Nr.	K (mm)
22865	76,2 (3')
22866	152,4 (6')



### How to use Movex 530 Pro LBP double-face Nosebar

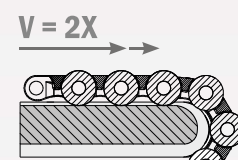


Movex 530 Pro LBP Nosebars are special Nosebars, specific to optimize the characteristics of this particular belt. It can be installed in two different ways: **idler side** and **active side**, depending if you want to obtain the accumulation or acceleration effects of the goods. In both modalities the same Nosebar is used: it simply needs to be installed on one side rather than the other. One face of the Nosebar is set up for the accumulation function and the opposite one for the acceleration function.



#### Idler System (sectional view)

The nosebar allows the belts rollers to remain raised above the surface, free to roll.

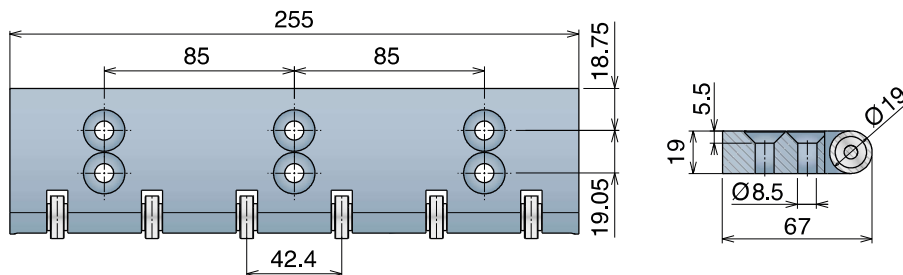
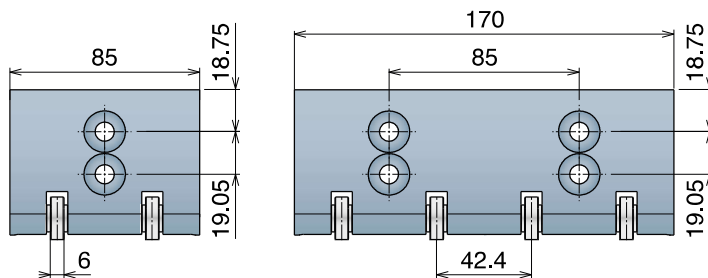


#### Active System (sectional view)

The nosebar allows the belt rollers to touch the surface, increasing the speed of the goods.

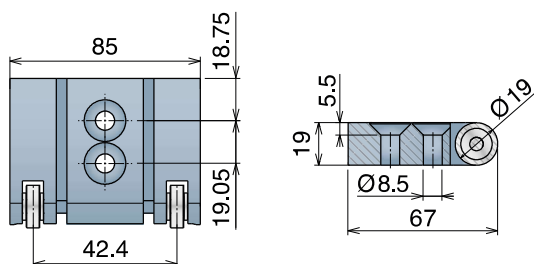
## NoseBars with Bearings for 520/525 Series

Delivery: **Easy** **Standard**



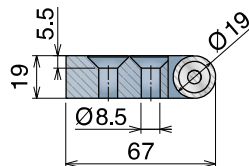
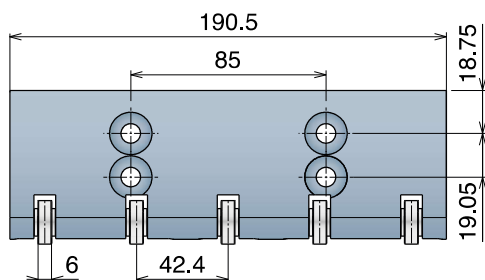
Article-Nr.	K (mm)
22811	85
22812	170
22813	255

Version B - With 1 Positioner | Version C - With 2 Positioners



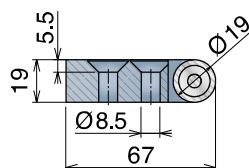
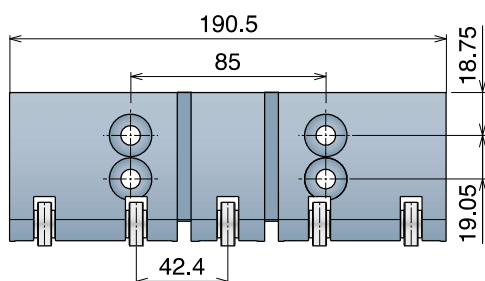
Article-Nr.	K (mm)
22817	85

## NoseBars with Bearings for 521 Series



Article-Nr.	K (mm)
22842C	190.5 (7.5')

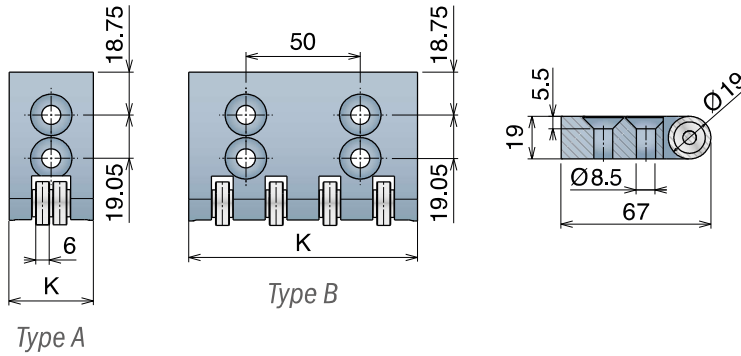
Version B - With 1 Positioner | Version C - With 2 Positioners



Article-Nr.	K (mm)
22845C	190.5 (7.5')

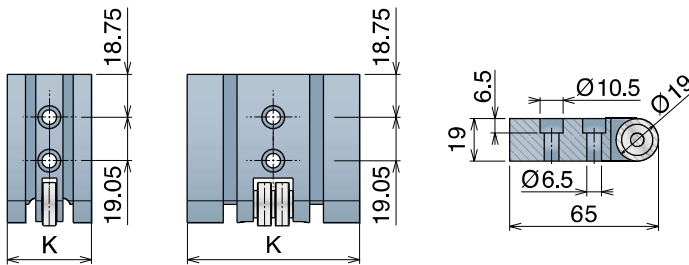
## NoseBars with Bearings for 522 HD Series

Delivery: **Easy** Standard



Article-Nr.	K (mm)	Type
22850	29	A
22851	34	A
22852	37	A
22853	51 (2')	A
22861	76,2 (3')	A
22854	100	B

Version B - With 1 Positioner | Version C - With 2 Positioners

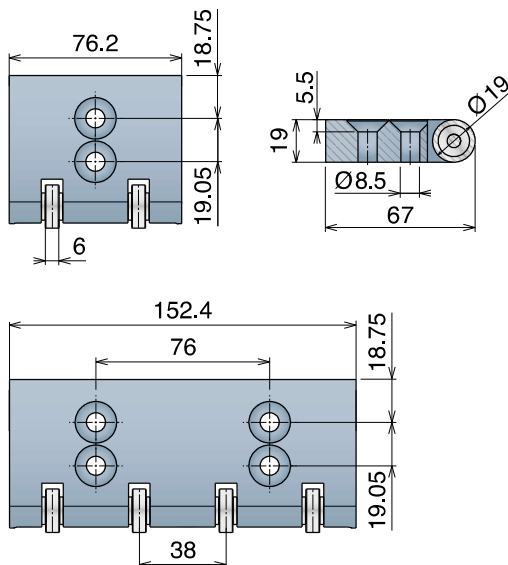


Article-Nr.	K (mm)
22850P	29
22851P	34
22852P	37
22853P	51 (2')
22861P	76,2 (3')

## NoseBars with Bearings for 530 Series

(LBP version excluded)

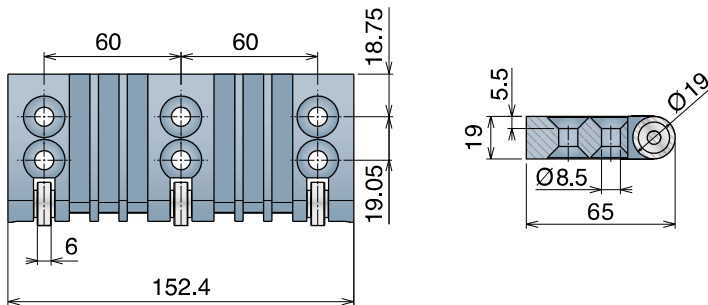
Delivery: **Easy** Standard



Article-Nr.	K (mm)
22861	76,2 (3')
22862	152,4 (6')

## NoseBar with Bearings for 530 LBP

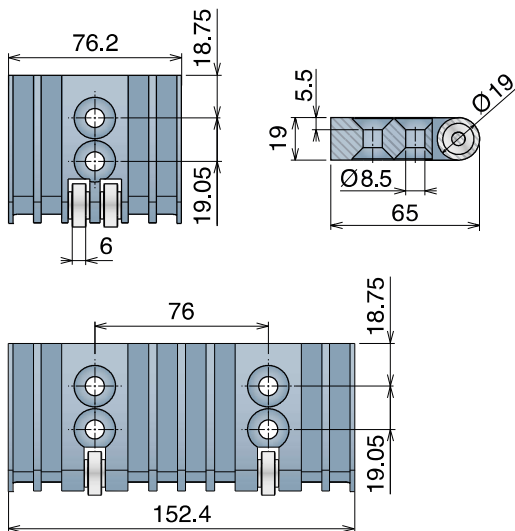
Article-Nr.	K (mm)
<b>22868</b>	152,4 (6')



## NoseBars with Bearings for 530 PRO LBP

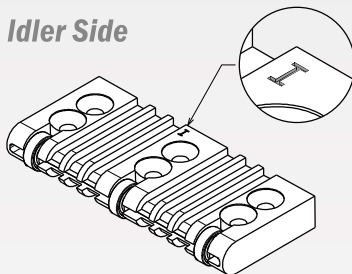
Delivery: **Easy** **Standard**

Article-Nr.	K (mm)
<b>22863</b>	76,2 (3')
<b>22864</b>	152,4 (6')

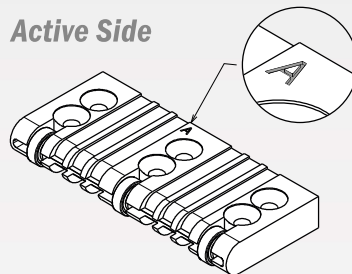


### How to use Movex 530 LBP and Pro LBP double-face Nosebar

**Idler Side**

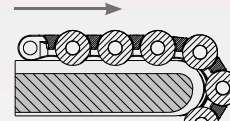


**Active Side**



Movex 530 LBP and Pro LBP Nosebars are special Nosebars, specific to optimize the characteristics of this particular belt. It can be installed in two different ways: **idler side** and **active side**, depending if you want to obtain the accumulation or acceleration effects of the goods. In both modalities the same Nosebar is used: it simply needs to be installed on one side rather than the other. One face of the Nosebar is set up for the accumulation function and the opposite one for the acceleration function.

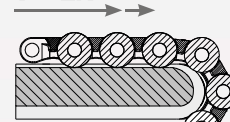
$V = X$



**Idler System (sectional view)**

The nosebar allows the belts rollers to remain raised above the surface, free to roll.

$V = 2X$



**Active System (sectional view)**

The nosebar allows the belt rollers to touch the surface, increasing the speed of the goods.

# NoseBars with Rollers

NoseBars / NoseBars / NoseBars

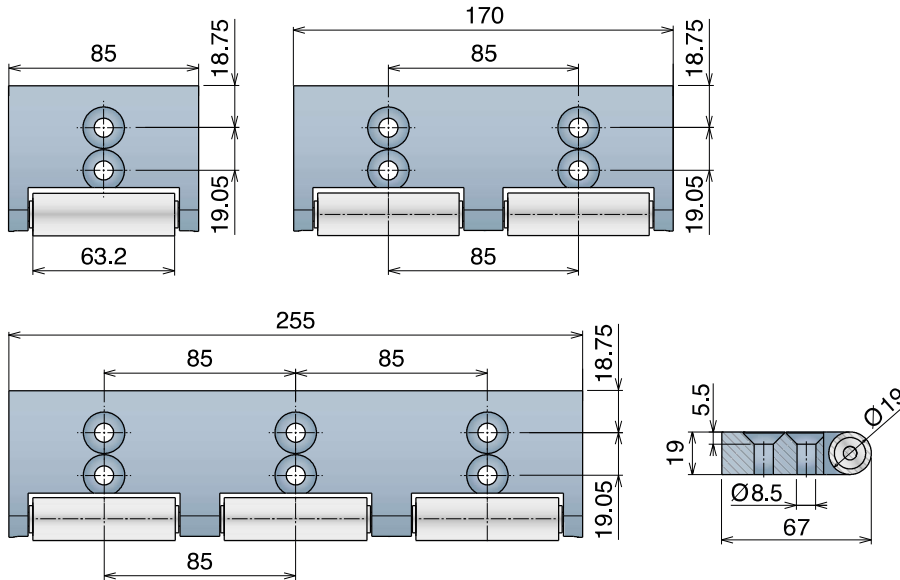
• Materiale / Material / Materialien:

**BluLub** Cuscinetti: Acciaio al cromo / Bearings: Chrome steel / Lagereinsätze: Chrom-Stahl

Rulli: Acciaio inox / Rollers: Stainless steel / Rollen: Edelstahl

## NoseBars with Rollers for 520/525 HD Series

Delivery: **Easy** **Standard**



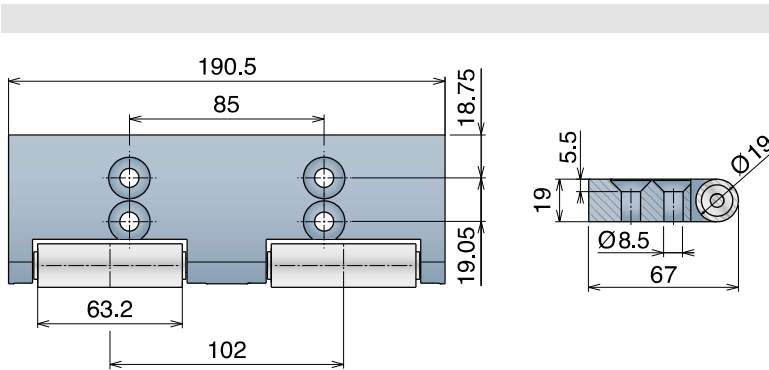
Article-Nr.	K (mm)
-------------	--------

22814	85
-------	----

22815	170
-------	-----

22816	255
-------	-----

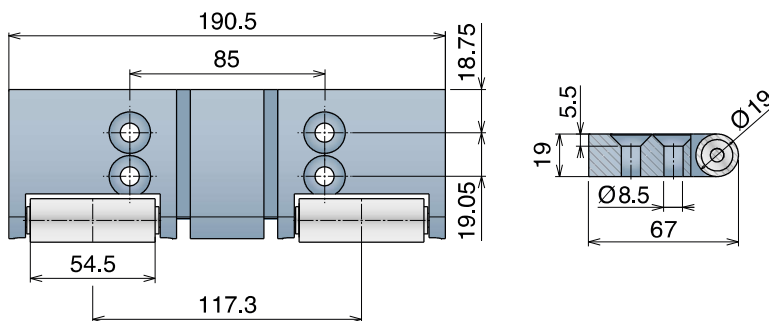
## NoseBars with Rollers for 521 Series



Article-Nr.	K (mm)
-------------	--------

22841B	190.5 (7.5')
--------	--------------

Version B - With 1 Positioner | Version C - With 2 Positioners

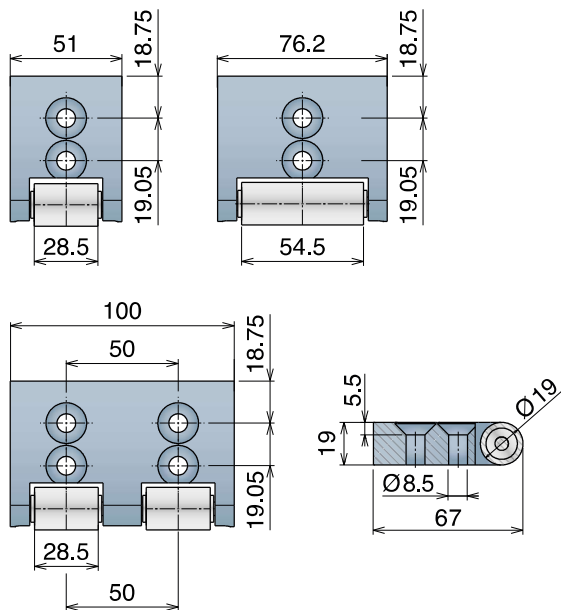


Article-Nr.	K (mm)
-------------	--------

22844B	190.5 (7.5')
--------	--------------



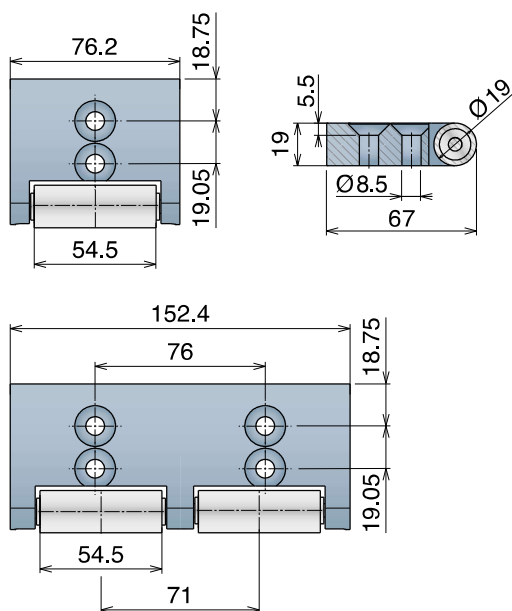
## NoseBars with Rollers for 522 HD Series



Article-Nr.	K (mm)
<b>22823B</b>	51 (2')
<b>22808B</b>	76,2 (3')
<b>22824B</b>	100

## NoseBars with Rollers for 530 Series

(LBP version excluded)



Article-Nr.	K (mm)
<b>22808B</b>	76,2 (3')
<b>22809B</b>	152,4 (6')

## One piece Standard

RANGE EXTENSION

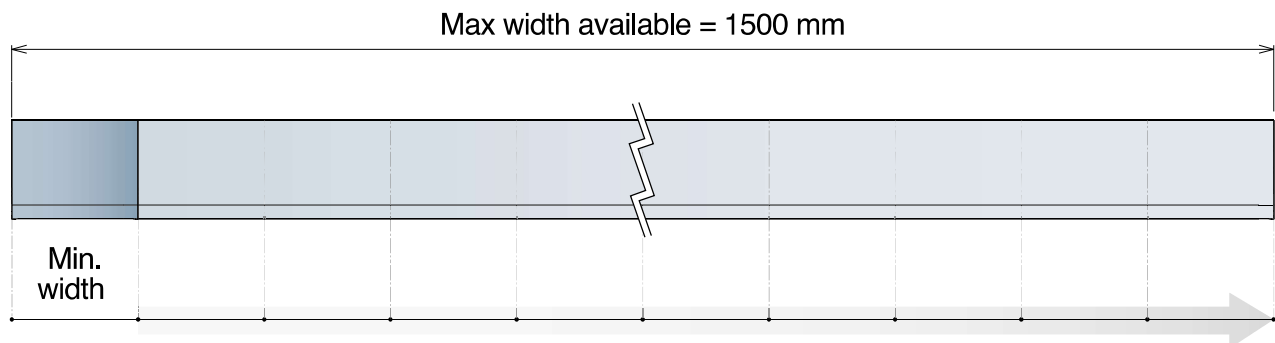
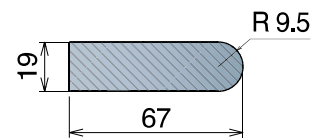
PATENTED

IDEAL FOR GENERAL APPLICATIONS

The custom made Movex Nosebars supplied in a single piece to perfectly match your needs.



**One piece** is a machined-to-width nosebar patented by Movex that greatly reduces the time necessary for the conveyor maintenance: being a single piece, of the required width, it is quick to install, easy to clean and offer a better level of hygiene.



### 520/525 Series

Min width:  
85 mm

Article-Nr.	K (mm)
2280425	425
2280510	510
2280595	595
2280680	680
2280765	765
2280850	850

### 522 HD Series

Min width:  
50 mm

Article-Nr.	K (mm)
2280200	200
2280250	250
2280300	300
2280350	350
2280400	400
2280450	450

### 530 Series

Min width:  
3 inch

Article-Nr.	K (mm)
2280457	457,2
2280533	533,4
2280610	609,6
2280686	685,8
2280762	762
2280838	838,2

Available different widths and with holes on request.

#### Advantages:

- Single piece
- Less fixing point
- Hygienical concept
- Easy to install
- Improved strength
- Fast maintenance
- Easy clean
- Reduced friction

## One piece with Bearings

RANGE EXTENSION

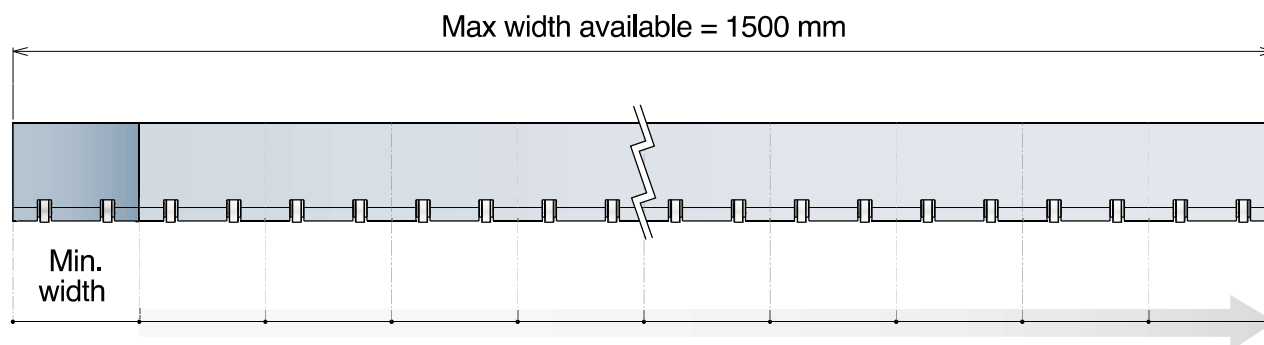
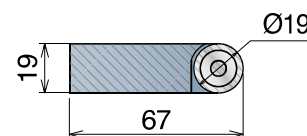
PATENTED

IDEAL FOR HIGH-SPEED APPLICATIONS

The custom made Movex Nosebars supplied in a single piece to perfectly match your needs.



**One piece with Bearings** is a machined-to-width nosebar patented by Movex that greatly reduces the time necessary for the conveyor maintenance: being a single piece with bearings, of the required width, it is quick to install, easy to clean, offers a better level of hygiene and is ideal for high-speed applications.



### 520/525 Series

Min width:  
85 mm

Article-Nr.	K (mm)
2280425C	425
2280510C	510
2280595C	595
2280680C	680
2280765C	765
2280850C	850

### 522 HD Series

Min width:  
50 mm

Article-Nr.	K (mm)
2280200C	200
2280250C	250
2280300C	300
2280350C	350
2280400C	400
2280450C	450

### 530 Series

Min width:  
3 inch

Article-Nr.	K (mm)
2280457C	457,2
2280533C	533,4
2280610C	609,6
2280686C	685,8
2280762C	762
2280838C	838,2

Available different widths and with holes on request.

#### Advantages:

- Single piece
- Less fixing point
- Hygienical concept
- Easy to install
- Improved strength
- Fast maintenance
- Easy clean
- Reduced friction

## One piece with Rollers

RANGE EXTENSION

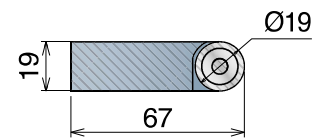
PATENTED

IDEAL FOR HIGH-LOAD APPLICATIONS

The custom made Movex Nosebars supplied in a single piece to perfectly match your needs.



One piece with Rollers and bearings is a machined-to-width nosebar patented by Movex that greatly reduces the time necessary for the conveyor maintenance: being a single piece with Rollers, of the required width, it is quick to install, easy to clean, offers a better level of hygiene and is ideal for heavy-load applications.



### 520/525 Series

Min width: 85 mm

Article-Nr.	K (mm)
2280425B	425
2280510B	510
2280595B	595
2280680B	680
2280765B	765
2280850B	850

### 522 HD Series

Min width: 50 mm

Article-Nr.	K (mm)
2280200B	200
2280250B	250
2280300B	300
2280350B	350
2280400B	400
2280450B	450

### 530 Series

Min width: 3 inch

Article-Nr.	K (mm)
2280457B	457,2
2280533B	533,4
2280610B	609,6
2280686B	685,8
2280762B	762
2280838B	838,2

Available different widths and with holes on request.

#### Advantages:

- Single piece
- Less fixing point
- Hygienical concept
- Easy to install
- Improved strength
- Fast maintenance
- Easy clean
- Reduced friction